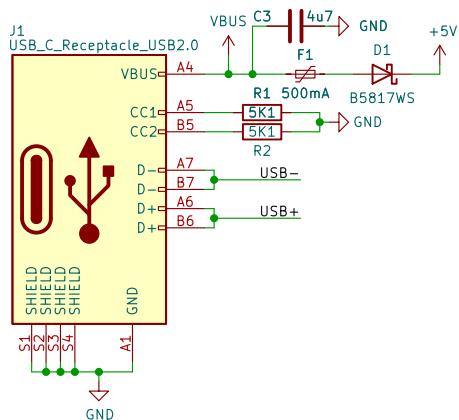
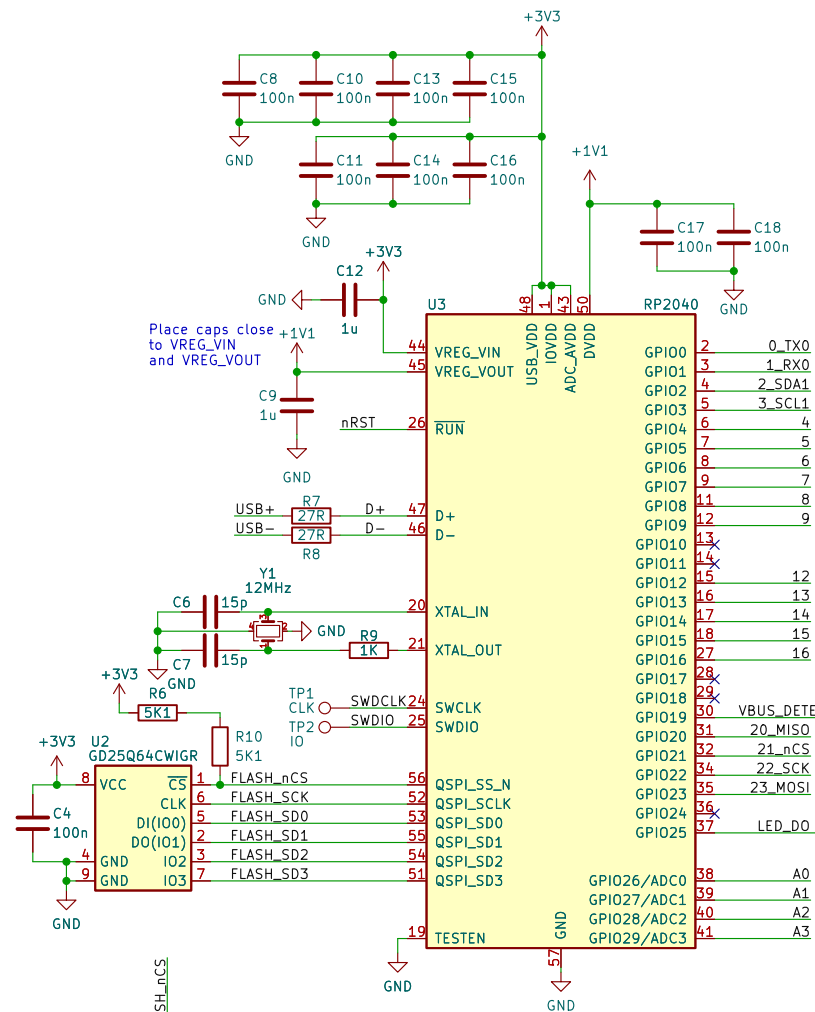


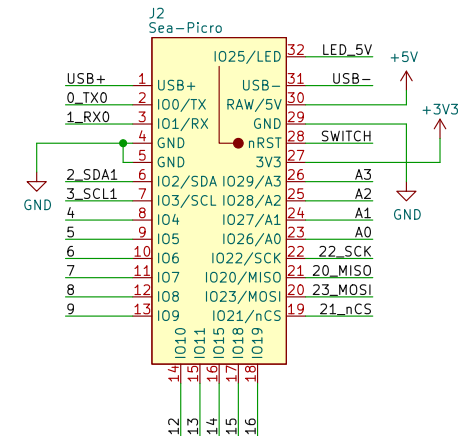
USB



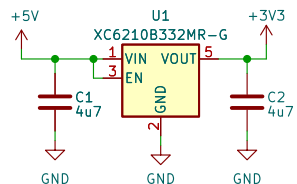
RP2040



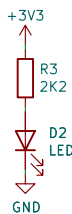
IO



Power

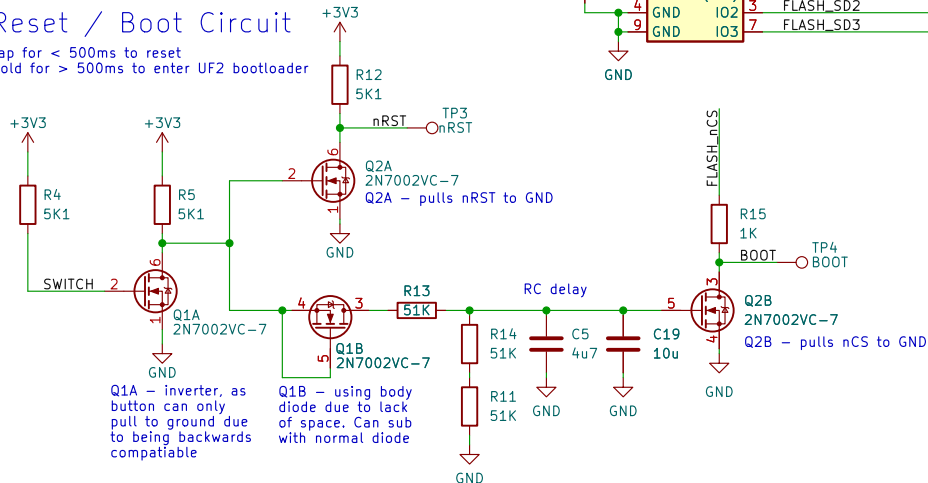


Power LED

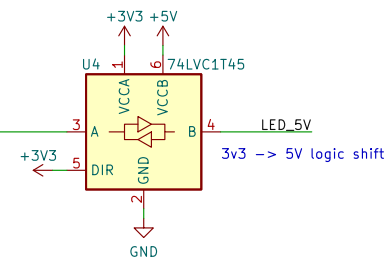


Reset / Boot Circuit

Tap for < 500ms to reset
Hold for > 500ms to enter UF2 bootloader



WS2812 Driver



Josh Johnson

Sheet: /
File: sea-picro.kicad_sch

Title: Sea Picro EXT

Size: A4 Date: 2022-07-28

KiCad E.D.A. kicad 6.0.7-f9a2dced07-116-ubuntu20.04.1

Rev: 1.0

Id: 1/1